



Huntington 1 Series

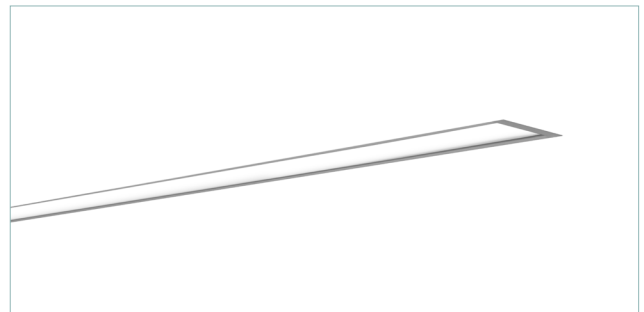
# HTG-1RW-LP

## RECESSED WALL

Brilliant by Design™, the Huntington 1 Recessed LoPro Wall is sure to level up your space. Our patent pending Microstructure EdgeTech Optics™ (MEO) technology delivers unparalleled optic control, low glare visual comfort, exceptional performance, seamless illumination, and uniformity in unprecedented low-profile behind wall depths. Lens gaps, pixelation and hot spots are a thing of the past with our innovative Dual Lens Edge-lit MEO™ technology.

## FEATURES

- Low profile depth behind ceiling for use in any plenum installation:
  - 1.5" - 1.75" Depth (Remote Driver)
  - 2.14" - 2.45" Depth (Integral Driver)
- Design without compromise: Specify Batwing, Glare Control, Diffused (Lambertian) Optics.
- Specified Lumen Outputs (SLO) available up to 1480 lm/ft.
- MEO™ allows for minimalistic 1.5" aperture fixtures with extremely low profiles.
- Individual fixture lengths and seamless continuous runs with no lens breaks up to 250 feet.
- Drivers, wiring and serviceability completely accessible through lens aperture with our patented toolless "Push to Eject" system.
- Toolless Latch System and Quick-Click 5 Wire system allows for simple, quick, and seamless installation.
- Trim Flange, Spackle Flange and Ceiling to Wall transitions available.
- 90+ CRI as a standard with Tunable White available.
- Proudly crafted in Huntington Beach, CA - USA.
- BABA compliant in most configurations. Consult factory for details.



## Performance Overview

4' Huntington 1 Direct - 3500K 90CRI MEODF				
Lumen Output	LL (Low)	ML (Medium)	HL (High)	SLO* (Specified)
Delivered Lumens	772	1908	3760	772-5920
Consumed Wattage	7	18	38	7.3 - 65.6
Efficacy (lm/w)	105	105	99	90-105
SDCM	3	3	3	3
*Specified Lumen Output (SLO) available in customizable lumen configurations (772 lm - 5920 lm). See SLO Configurator at <a href="https://www.extantlighting.com">ExtantLighting.com</a>				



**EXTANT ARCHITECTURAL LIGHTING™**

15161 Triton Lane, Huntington Beach, CA 92649 | ☎ 714-362-8099 | [ExtantLighting.com](https://www.extantlighting.com)

\* Due to our culture of always striving for product enhancement, specifications and information within this document are subject to change without notice. 2020 Extant Lighting, Inc. All rights reserved.

## ORDERING INFORMATION

Project: \_\_\_\_\_

Date: \_\_\_\_\_ Type: \_\_\_\_\_

Product Family	Driver Location	Trim	Length	Lumen Output	Optics
<b>HTG-1RW-LP</b> Huntington Series 1.5" Aperture (Recessed LoPro)	<b>TD</b> Integral Driver <b>RD</b> Remote Driver	<b>TRIM FLANGE</b> <b>TFSA</b> Trim Flange - Silver Anodized <b>TFWP</b> Trim Flange - Matte White <b>TFBP</b> Trim Flange - Matte Black <b>TFCC</b> Trim Flange - Custom Color <b>TRIMLESS</b> <b>SF</b> Spackle Flange (Mud-In)	____ Specify Length* <b>R_X</b> Rectangle <b>L_X</b> L Pattern <b>U_X_X</b> U Pattern <b>C_W</b> Ceiling to Wall Transition** <b>PC</b> Custom Pattern  *Minimum Integral Driver length is 2'. Minimum Remote can be shorter, consult factory. *Custom length fixtures can be ordered in 3" increments. **Any length over 8' requires multiple fixture segments. **Example: C14'W12'	<b>DLL</b> Low (193 lm/ft @ 1.84 lm/w)* <b>DML</b> Medium (477 lm/ft @ 4.55 lm/w)* <b>DHL</b> High (940 lm/ft @ 9.46 lm/w)* <b>SLO-XX</b> Specified Lumen Output available.**  *Delivered lumen output & consumed wattage based on "MEODF 35" (90 CRI - 3500K). See SLO Configurator for alternate outputs. **See SLO Configurator at <a href="http://ExtantLighting.com">ExtantLighting.com</a> for appropriate "XX" output.	<b>MEO</b> <b>MEODF</b> Diffusing <b>MEOBW</b> Batwing <b>MEOGC</b> Glare Control

Color Temp	Voltage	Driver	Options
<b>27</b> 2700K <b>30</b> 3000K <b>35</b> 3500K <b>40</b> 4000K <b>50</b> 5000K <b>TW</b> 2700K-6500K (85+ CRI) <b>XX</b> Optional Color Temp & CRI Available  90+ CRI is standard unless otherwise noted.	<b>VU</b> 120V-277V <b>V3</b> 347V	<b>D</b> 1% 0-10V* <b>DN</b> Non Dim <b>DELV</b> 1% Electronic Low Voltage Dimming (Reverse Phase dimming-120V only) <b>DTRIAC</b> 1% Electronic Low Voltage Dimming (Forward Phase dimming-120V only) <b>DL1</b> Lutron Hi-Lume 1% EcoSystem <b>DE</b> .1% 0-10V <b>DD1</b> 1% DALI <b>DDE</b> .1% DALI <b>DMX</b> .1% DMX/RDM <b>DTW</b> 1% 0-10V Tunable White <b>DT8</b> 1% DALI Tunable White <b>XX</b> Other (Please Specify)  *Dim to Off available. Please Specify "OFF" next to driver option if required.	<b>EMC</b> Emergency Circuit(s)* <b>EMB</b> Emergency Battery Pack(s)* <b>SOC</b> Occupancy Sensor* <b>SDL</b> Daylight Sensor* <b>BCS</b> Brilliant Communications Solutions (wired/wireless)* <b>MTC</b> Multiple Circuit(s) (Daylight, Occupancy, Zone Specific)* <b>JA8</b> JA8 Compliant <b>CP</b> Chicago Plenum Approved  *EMC: Specify quantity of emergency circuits per run. *EMB: Specify quantity of battery packs per run. Minimum 4' unit. *SOC & SDL: Specify spacing/location of sensor(s). *MTC: Circuit location(s) to be identified through factory supplied drawings *BCS: Includes wired & wireless integration from our partners at nLight™, enlightened, Legrand, Crestron, Osram, Lutron & many more.



## Specifications

**CONSTRUCTION** One-piece heavy gauge 6063 extruded aluminum housing. Precision-machined aluminum end caps.

**OPTICS** Microstructure EdgeTech Optics (MEO)™ utilizes high efficiency Microstructure Lenses and Light Guide Plates for high optical extraction and precise light management. Specify Batwing, Glare Control, or Diffused (Lambertian) Optics.

**LIGHT OUTPUT** (3) Standard lumen packages are available: Low (DLL), Medium (DML) and High (DHL). Specified Lumen Output (SLO) packages available. Please see the (SLO) configurator at [ExtantLighting.com](http://ExtantLighting.com).

**LEDs** Latest generation of premium Nichia 3-step MacAdam Ellipse LED's available in (90+ CRI) 2700K, 3000K, 3500K, 4000K, and 5000K. Tunable White available. LED modules are easily accessible and replaceable.

**VOLTAGE** Universal 120/277V (VU) and 347V (V3) available. Consult factory for driver options when 347V is specified.

**EMERGENCY BATTERY** Factory provided low profile 6.5W emergency battery for UL924 required 90-minute run time.

**FINISH** Standard finishes include powder coated silver anodized, powder coated matte white or powder coated matte black. Custom powder coated finishes available (RAL number matched).

**CONTINUOUS ROWS** Innovative Toolless Latch System ensures simple installation. Seamless continuous rows with no lens breaks, pixelation or hotspots up to 250 feet.

**PATTERNS** Standard Rectangle Pattern (R), U Pattern (U), and L Pattern (L) available. Custom patterns available.

**MOUNTING** Trim Flange or Spackle Flange.

**APPROVALS** UL and cUL Listed. Approved for Dry/Damp locations. IC Rated. Made in the USA. BABA compliant in most configurations. Chicago Plenum Approved. JA8 Approved.

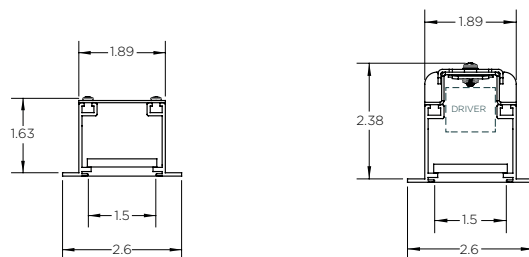
**LUMEN MAINTENANCE** (L70) 70% of initial light output = Reported > 60,000 hours | Calculated > 200,000 hours (L90) 90% of initial light output = Reported > 60,000 hours | Calculated > 200,000 hours.

**WARRANTY** All Extant fixtures offered with a 5-year limited warranty which covers LED, driver and fixture. For further details, refer to General Warranty and Obligations at [ExtantLighting.com](http://ExtantLighting.com).

**PATENTS** Extant Lighting's intellectual property is protected under Patent No. US 11,378,262 B2 and 12,007,101 B2 by the U.S. Patent Office.

## Dimensions

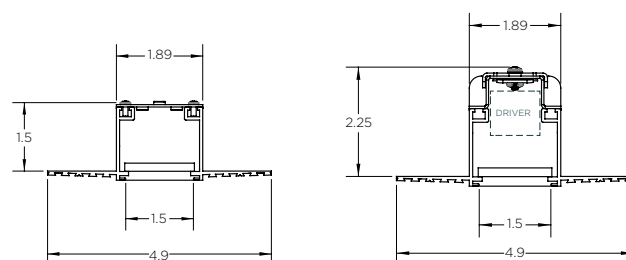
### TF - TRIM FLANGE



HTG-1RW-LP REMOTE

HTG-1RW-LP INTEGRAL

### SF - SPACKLE FLANGE

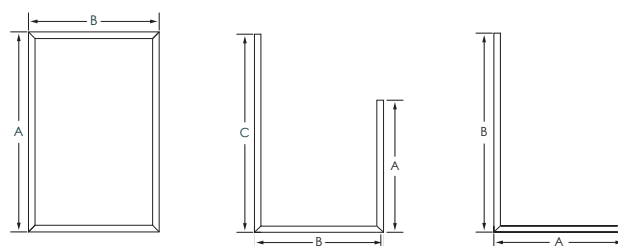


HTG-1RW-LP REMOTE

HTG-1RW-LP INTEGRAL

## Patterns

Note: All miters/patterns shown and ordered in plan view.



R\_X  
Rectangle  
Provide Ax B  
Example: R6'x4'

U\_X\_X  
U-Shape  
Provide Ax BxC  
Example: U4'x4'x6'

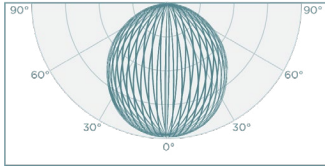
L\_X  
L-Shape  
Provide Ax B  
Example: L4'x6'



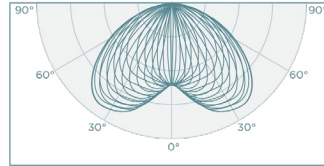
## Microstructure EdgeTech Optics (MEO)™

MEO™ Optics can be specified in direct and indirect orientation. Our innovative MEO™ design utilizes high efficiency Microstructure Lenses and Light Guide Plates for high optical extraction and precise light management. MEO™ delivers exceptional light quality with seamless illumination and uniformity with no pixelation, hot spots or lens breaks up to 250' continuous rows.

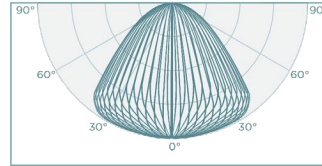
### DIRECT



**MEODF**  
LAMBERTIAN



**MEOBW**  
BATWING



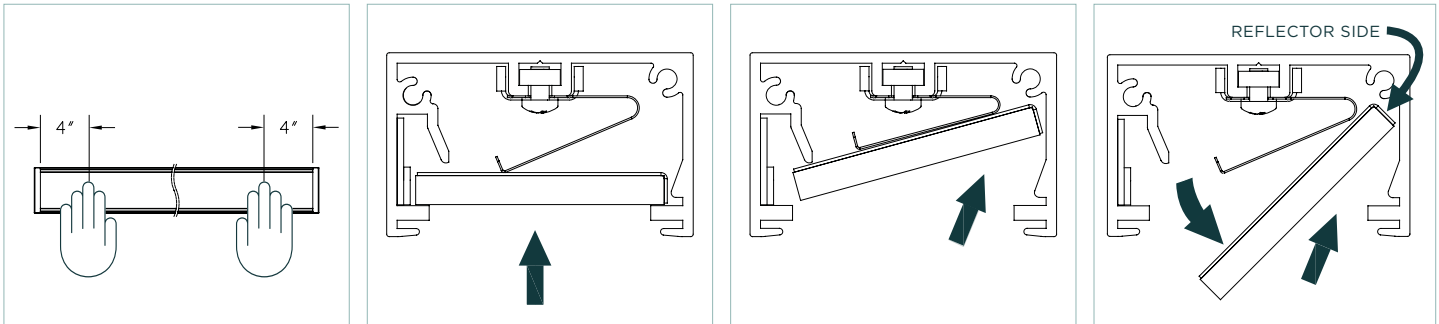
**MEOGC**  
GLARE CONTROL

## Installation

Thoughtful engineering is at the core of all of our fixture designs. All of our products are thoughtfully engineered and include innovative features that create a sophisticated fixture that is also contractor friendly and easy to install and service.

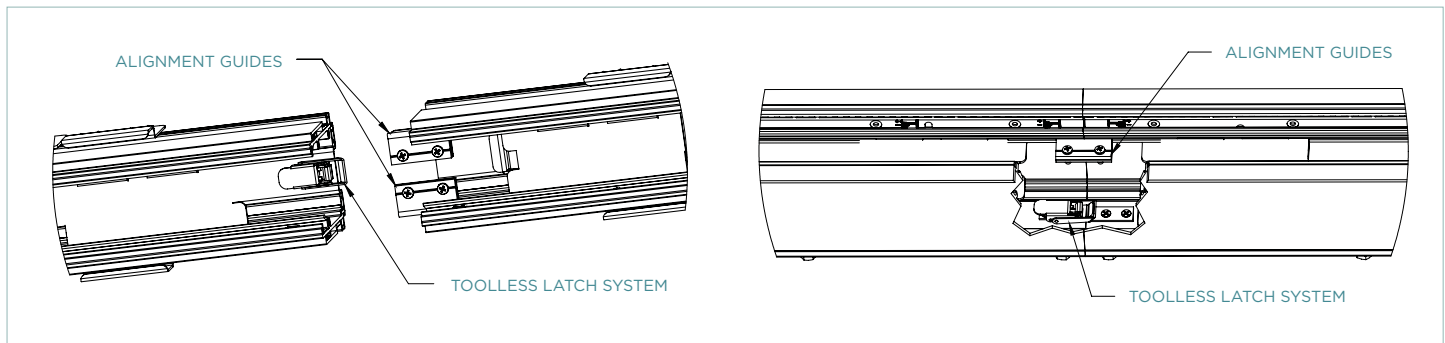
### PUSH TO EJECT SYSTEM

Innovative "Push to Eject" system allows for toolless removal and installation of the Light Guide Plate. This thoughtful engineering creates easy access into the housing for simple installation and serviceability.



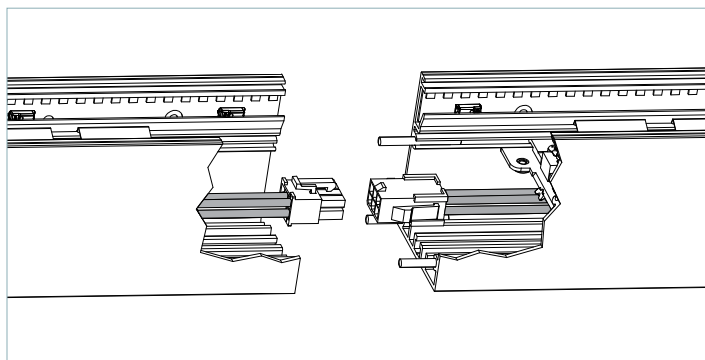
### TOOLLESS LATCH SYSTEM

Our Toolless Latch system is designed to securely connect the extrusions of the continuous runs without the use of any tools, screws or external parts. Our innovative design allows the contractor to perfectly align the extrusion with the built-in alignment guides and cinch up the extrusion with the Toolless Latch system for a tight fit. The Toolless Latch system eliminates gaps and ensures perfect alignment.



### QUICK-CLICK THRU-WIRE SYSTEM

Our integral driver Quick-Click Thru-Wire system connects the continuous run through wiring with a simple push and click connection. The Quick-Click system is contractor friendly and decreases installation time and cost and ensures proper wiring.



### MEO™ OPTIC

MEO™ design utilizes high efficiency extraction and precise light management. MEO™ lens must be installed to ensure proper performance.

